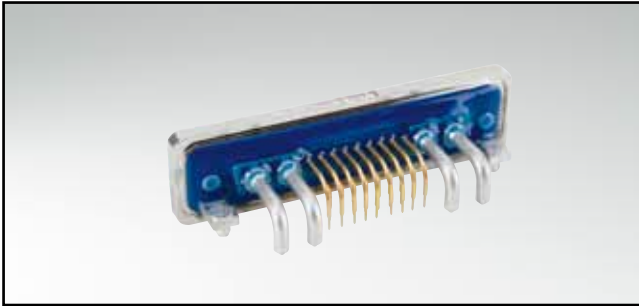


IP67 COMBINATION D-SUB

Solder pin – Angled – .465" / 11.8 mm – Precision machined contacts –
Metal bracket with PCB clip

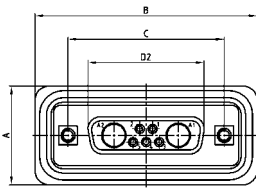


RoHS compliant – CSA listed, File No.: LR 115000-1 – UL listed, File No.: E202784

DESCRIPTION

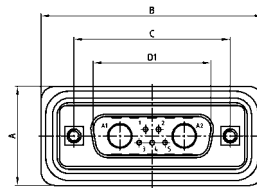
- Contacts: high power or coaxial contacts
- Mounting style:
metal bracket, threaded insert and 4-40 UNC or M3 PCB clip
- Quality class 3 (also available in quality class 1)
- Shell: Brass tin plated (Stainless steel on request)
- Nickel plated die-cast frame
(Black plastic frame on request)
- Shell size 5 on request
- Suitable hex bolts are supplied loose

SOCKET CONNECTOR

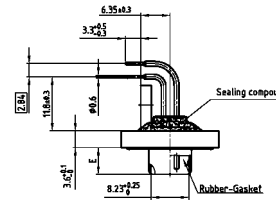
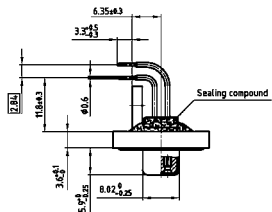
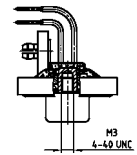
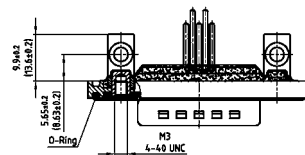
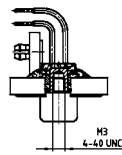
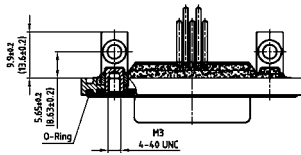


Shell size	A +0.2	B +0.2	C	D2 ±0.25
1	21.10	39.40	25.00 ^{+0.12} _{-0.13}	16.46
2	21.10	47.70	33.30 ^{+0.15} _{-0.10}	24.79
3	21.10	61.40	47.04 ^{+0.13}	38.50
4	21.10	77.90	63.50 ±0.13	54.96

PLUG CONNECTOR



Shell size	A +0.2	B +0.2	C	D1 ±0.25	E -0.30
1	21.10	39.40	25.00 ^{+0.12} _{-0.13}	16.79	5.82
2	21.10	47.70	33.30 ^{+0.15} _{-0.10}	25.12	5.82
3	21.10	61.40	47.04 ^{+0.13}	38.84	5.69
4	21.10	77.90	63.50 ±0.13	55.30	5.69



ORDER DATA

SOCKET CONNECTOR		High power contact	Part Number
Design	Mounting style 4-40 UNC		
5W1	PCB clip/Threaded insert	15 A	6 005W1SAZ59S40 X
7W2	PCB clip/Threaded insert	15 A	6 007W2SAZ59S40 X
11W1	PCB clip/Threaded insert	15 A	6 011W1SAZ59S40 X
9W4	PCB clip/Threaded insert	15 A	6 009W4SAZ59S40 X
13W3	PCB clip/Threaded insert	15 A	6 013W3SAZ59S40 X
17W2	PCB clip/Threaded insert	15 A	6 017W2SAZ59S40 X
21W1	PCB clip/Threaded insert	15 A	6 021W1SAZ59S40 X
13W6	PCB clip/Threaded insert	15 A	6 013W6SAZ59S40 X
17W5	PCB clip/Threaded insert	15 A	6 017W5SAZ59S40 X
21WA4	PCB clip/Threaded insert	15 A	6 21WA4SAZ59S40 X
25W3	PCB clip/Threaded insert	15 A	6 025W3SAZ59S40 X
27W2	PCB clip/Threaded insert	15 A	6 027W2SAZ59S40 X

PLUG CONNECTOR		High power contact	Part Number
Design	Mounting style 4-40 UNC		
5W1	PCB clip/Threaded insert	15 A	6 005W1PAZ59S40 X
7W2	PCB clip/Threaded insert	15 A	6 007W2PAZ59S40 X
11W1	PCB clip/Threaded insert	15 A	6 011W1PAZ59S40 X
9W4	PCB clip/Threaded insert	15 A	6 009W4PAZ59S40 X
13W3	PCB clip/Threaded insert	15 A	6 013W3PAZ59S40 X
17W2	PCB clip/Threaded insert	15 A	6 017W2PAZ59S40 X
21W1	PCB clip/Threaded insert	15 A	6 021W1PAZ59S40 X
13W6	PCB clip/Threaded insert	15 A	6 013W6PAZ59S40 X
17W5	PCB clip/Threaded insert	15 A	6 017W5PAZ59S40 X
21WA4	PCB clip/Threaded insert	15 A	6 21WA4PAZ59S40 X
25W3	PCB clip/Threaded insert	15 A	6 025W3PAZ59S40 X
27W2	PCB clip/Threaded insert	15 A	6 027W2PAZ59S40 X

PCB clip .122" / 3.1 ± .004" / 0.10 mm hole diameter and .063" / 1.6 mm circuit board thickness.

For other contact configurations refer to part number creator.

Contact	Code
High power 15 A ; E= .075" / 1.90 mm =	59
High power 20 A ; E= .110" / 2.85 mm =	73
High power 30 A ; E= .126" / 3.20 mm =	74
High power 40 A ; E= .150" / 3.75 mm =	75