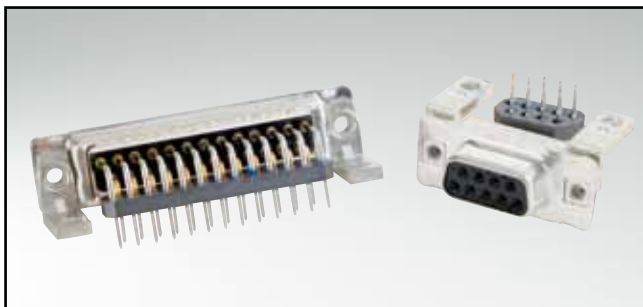


# LC-FILTER D-SUB STANDARD

Solder pin – Angled – .370" / 9.4 mm – Precision machined contacts – Metal bracket

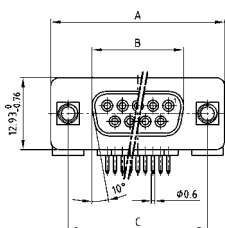


RoHS compliant – CSA listed, File No.: LR 115000-1 – UL listed, File No.: E202784

## DESCRIPTION

- Mounting styles:
  - Mounting bracket with 4-40 UNC or M3 threaded insert
  - Mounting bracket with PCB clip and 4-40 UNC or M3 threaded insert
- Quality class 3 (also available in quality class 1)
- Shell: Steel tin plated (brass tin plated on request)

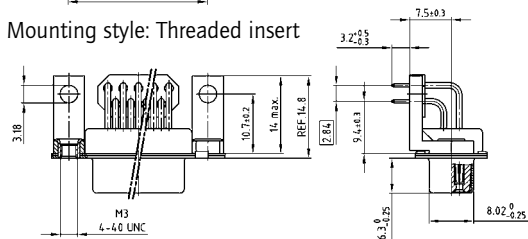
## SOCKET CONNECTOR



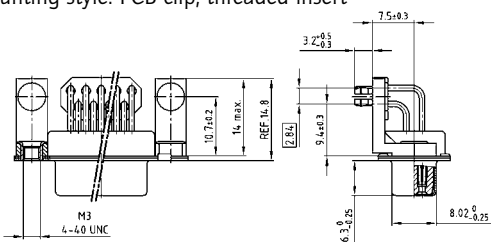
No. of pos.	A -0.76	B -0.25	C
09	31.19	16.46	25.00 <sup>+0.12</sup> / <sub>-0.13</sub>
15	39.52	24.79	33.30 <sup>+0.15</sup> / <sub>-0.10</sub>
25	53.42	38.50	47.04 <sup>+0.13</sup>
37	69.70	54.96	63.50 <sup>+0.13</sup>

PCB layout: Kat1kGGA

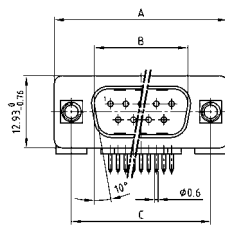
Mounting style: Threaded insert



Mounting style: PCB clip, threaded insert



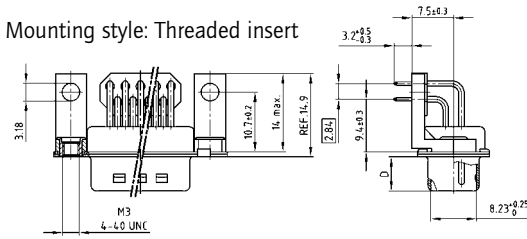
## PLUG CONNECTOR



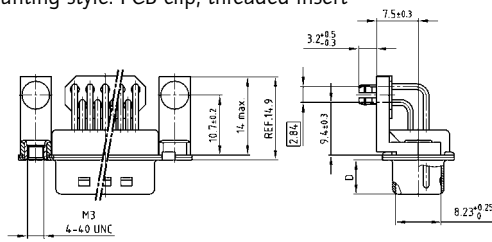
No. of pos.	A -0.76	B +0.25	C	D -0.3
09	31.19	16.79	25.00 <sup>+0.12</sup> / <sub>-0.13</sub>	6.12
15	39.52	25.12	33.30 <sup>+0.15</sup> / <sub>-0.10</sub>	6.12
25	53.42	38.84	47.04 <sup>+0.13</sup>	5.99
37	69.70	55.30	63.50 <sup>+0.13</sup>	5.99

PCB layout: Kat1kGHA

Mounting style: Threaded insert



Mounting style: PCB clip, threaded insert



## ORDER DATA

### Capacitance 180 pF

#### SOCKET CONNECTOR

No. of pos.	Mounting style	Part Number
09	4-40 UNC Threaded insert	242 A 24980 X
15	4-40 UNC Threaded insert	242 A 24990 X
25	4-40 UNC Threaded insert	242 A 25000 X
37	4-40 UNC Threaded insert	242 A 25010 X
09	M3 Threaded insert	242 A 25140 X
15	M3 Threaded insert	242 A 25150 X
25	M3 Threaded insert	242 A 25160 X
37	M3 Threaded insert	242 A 25170 X
09	PCB clip / 4-40 UNC Threaded insert	242 A 25300 X
15	PCB clip / 4-40 UNC Threaded insert	242 A 25310 X
25	PCB clip / 4-40 UNC Threaded insert	242 A 25320 X
37	PCB clip / 4-40 UNC Threaded insert	242 A 25330 X
09	PCB clip / M3 Threaded insert	242 A 25460 X
15	PCB clip / M3 Threaded insert	242 A 25470 X
25	PCB clip / M3 Threaded insert	242 A 25480 X
37	PCB clip / M3 Threaded insert	242 A 25490 X

#### PLUG CONNECTOR

No. of pos.	Mounting style	Part Number
09	4-40 UNC Threaded insert	241 A 25080 X
15	4-40 UNC Threaded insert	241 A 25090 X
25	4-40 UNC Threaded insert	241 A 25100 X
37	4-40 UNC Threaded insert	241 A 25110 X
09	M3 Threaded insert	241 A 25240 X
15	M3 Threaded insert	241 A 25250 X
25	M3 Threaded insert	241 A 25260 X
37	M3 Threaded insert	241 A 25270 X
09	PCB clip / 4-40 UNC Threaded insert	241 A 25400 X
15	PCB clip / 4-40 UNC Threaded insert	241 A 25410 X
25	PCB clip / 4-40 UNC Threaded insert	241 A 25420 X
37	PCB clip / 4-40 UNC Threaded insert	241 A 25430 X
09	PCB clip / M3 Threaded insert	241 A 25560 X
15	PCB clip / M3 Threaded insert	241 A 25570 X
25	PCB clip / M3 Threaded insert	241 A 25580 X
37	PCB clip / M3 Threaded insert	241 A 25590 X

PCB clip .122" / 3.1 ± .004" / 0.10 mm hole diameter and .063" / 1.6 mm circuit board thickness

# LC-FILTER D-SUB STANDARD

Solder pin – Angled – .370" / 9.4 mm – Precision machined contacts – Metal bracket

**ORDER DATA**

**Capacitance 370 pF**

SOCKET CONNECTOR			PLUG CONNECTOR		
No. of pos.	Mounting style	Part Number	No. of pos.	Mounting style	Part Number
09	4-40 UNC Threaded insert	242 A 25020 X	09	4-40 UNC Threaded insert	241 A 25120 X
15	4-40 UNC Threaded insert	242 A 25030 X	15	4-40 UNC Threaded insert	241 A 25130 X
25	4-40 UNC Threaded insert	242 A 25040 X	25	4-40 UNC Threaded insert	241 A 25140 X
37	4-40 UNC Threaded insert	242 A 25050 X	37	4-40 UNC Threaded insert	241 A 25150 X
09	M3 Threaded insert	242 A 25180 X	09	M3 Threaded insert	241 A 25280 X
15	M3 Threaded insert	242 A 25190 X	15	M3 Threaded insert	241 A 25290 X
25	M3 Threaded insert	242 A 25200 X	25	M3 Threaded insert	241 A 25300 X
37	M3 Threaded insert	242 A 25210 X	37	M3 Threaded insert	241 A 25310 X
09	PCB clip / 4-40 UNC Threaded insert	242 A 25340 X	09	PCB clip / 4-40 UNC Threaded insert	241 A 25440 X
15	PCB clip / 4-40 UNC Threaded insert	242 A 25350 X	15	PCB clip / 4-40 UNC Threaded insert	241 A 25450 X
25	PCB clip / 4-40 UNC Threaded insert	242 A 25360 X	25	PCB clip / 4-40 UNC Threaded insert	241 A 25460 X
37	PCB clip / 4-40 UNC Threaded insert	242 A 25370 X	37	PCB clip / 4-40 UNC Threaded insert	241 A 25470 X
09	PCB clip / M3 Threaded insert	242 A 25500 X	09	PCB clip / M3 Threaded insert	241 A 25600 X
15	PCB clip / M3 Threaded insert	242 A 25510 X	15	PCB clip / M3 Threaded insert	241 A 25610 X
25	PCB clip / M3 Threaded insert	242 A 25520 X	25	PCB clip / M3 Threaded insert	241 A 25620 X
37	PCB clip / M3 Threaded insert	242 A 25530 X	37	PCB clip / M3 Threaded insert	241 A 25630 X

**Capacitance 830 pF**

SOCKET CONNECTOR			PLUG CONNECTOR		
No. of pos.	Mounting style	Part Number	No. of pos.	Mounting style	Part Number
09	4-40 UNC Threaded insert	242 A 25060 X	09	4-40 UNC Threaded insert	241 A 25160 X
15	4-40 UNC Threaded insert	242 A 25070 X	15	4-40 UNC Threaded insert	241 A 25170 X
25	4-40 UNC Threaded insert	242 A 25080 X	25	4-40 UNC Threaded insert	241 A 25180 X
37	4-40 UNC Threaded insert	242 A 25090 X	37	4-40 UNC Threaded insert	241 A 25190 X
09	M3 Threaded insert	242 A 25220 X	09	M3 Threaded insert	241 A 25320 X
15	M3 Threaded insert	242 A 25230 X	15	M3 Threaded insert	241 A 25330 X
25	M3 Threaded insert	242 A 25240 X	25	M3 Threaded insert	241 A 25340 X
37	M3 Threaded insert	242 A 25250 X	37	M3 Threaded insert	241 A 25350 X
09	PCB clip / 4-40 UNC Threaded insert	242 A 25380 X	09	PCB clip / 4-40 UNC Threaded insert	241 A 25480 X
15	PCB clip / 4-40 UNC Threaded insert	242 A 25390 X	15	PCB clip / 4-40 UNC Threaded insert	241 A 25490 X
25	PCB clip / 4-40 UNC Threaded insert	242 A 25400 X	25	PCB clip / 4-40 UNC Threaded insert	241 A 25500 X
37	PCB clip / 4-40 UNC Threaded insert	242 A 25410 X	37	PCB clip / 4-40 UNC Threaded insert	241 A 25510 X
09	PCB clip / M3 Threaded insert	242 A 25540 X	09	PCB clip / M3 Threaded insert	241 A 25640 X
15	PCB clip / M3 Threaded insert	242 A 25550 X	15	PCB clip / M3 Threaded insert	241 A 25650 X
25	PCB clip / M3 Threaded insert	242 A 25560 X	25	PCB clip / M3 Threaded insert	241 A 25660 X
37	PCB clip / M3 Threaded insert	242 A 25570 X	37	PCB clip / M3 Threaded insert	241 A 25670 X

**Capacitance 1300 pF**

SOCKET CONNECTOR			PLUG CONNECTOR		
No. of pos.	Mounting style	Part Number	No. of pos.	Mounting style	Part Number
09	4-40 UNC Threaded insert	242 A 25100 X	09	4-40 UNC Threaded insert	241 A 25200 X
15	4-40 UNC Threaded insert	242 A 25110 X	15	4-40 UNC Threaded insert	241 A 25210 X
25	4-40 UNC Threaded insert	242 A 25120 X	25	4-40 UNC Threaded insert	241 A 25220 X
37	4-40 UNC Threaded insert	242 A 25130 X	37	4-40 UNC Threaded insert	241 A 25230 X
09	M3 Threaded insert	242 A 25260 X	09	M3 Threaded insert	241 A 25360 X
15	M3 Threaded insert	242 A 25270 X	15	M3 Threaded insert	241 A 25370 X
25	M3 Threaded insert	242 A 25280 X	25	M3 Threaded insert	241 A 25380 X
37	M3 Threaded insert	242 A 25290 X	37	M3 Threaded insert	241 A 25390 X
09	PCB clip / 4-40 UNC Threaded insert	242 A 25420 X	09	PCB clip / 4-40 UNC Threaded insert	241 A 25520 X
15	PCB clip / 4-40 UNC Threaded insert	242 A 25430 X	15	PCB clip / 4-40 UNC Threaded insert	241 A 25530 X
25	PCB clip / 4-40 UNC Threaded insert	242 A 25440 X	25	PCB clip / 4-40 UNC Threaded insert	241 A 25540 X
37	PCB clip / 4-40 UNC Threaded insert	242 A 25450 X	37	PCB clip / 4-40 UNC Threaded insert	241 A 25550 X
09	PCB clip / M3 Threaded insert	242 A 25580 X	09	PCB clip / M3 Threaded insert	241 A 25680 X
15	PCB clip / M3 Threaded insert	242 A 25590 X	15	PCB clip / M3 Threaded insert	241 A 25690 X
25	PCB clip / M3 Threaded insert	242 A 25600 X	25	PCB clip / M3 Threaded insert	241 A 25700 X
37	PCB clip / M3 Threaded insert	242 A 25610 X	37	PCB clip / M3 Threaded insert	241 A 25710 X

PCB clip .122" / 3.1 ± .004" / 0.10 mm hole diameter and .063" / 1.6 mm circuit board thickness